

Key Features of OptionPower®

OptionPower has a variety of features designed to make your interactive presentations simple and successful. Harnessing the vast power of Microsoft® PowerPoint®, OptionPower opens up a world of features that allow you to create unique, interactive presentations. All that is required of you is your creativity and your PowerPoint know-how.

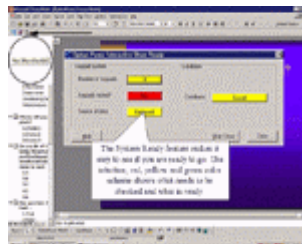
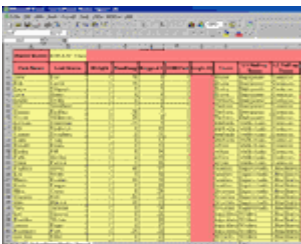
Before the Meeting

Microsoft® Word® Import: OptionPower saves you time and trouble with its ability to import questions from Microsoft Word files directly into your interactive presentation, while still retaining your ability to edit questions and question order with OptionPower.

The System-Ready Checklist: The System-Ready Checklist clearly shows when your presentation is ready to go. The red, yellow and green signal lets you see where you have unresolved issues and links you right to the solution. Use the System-Ready Checklist to ensure a flawless presentation without any unwanted surprises.

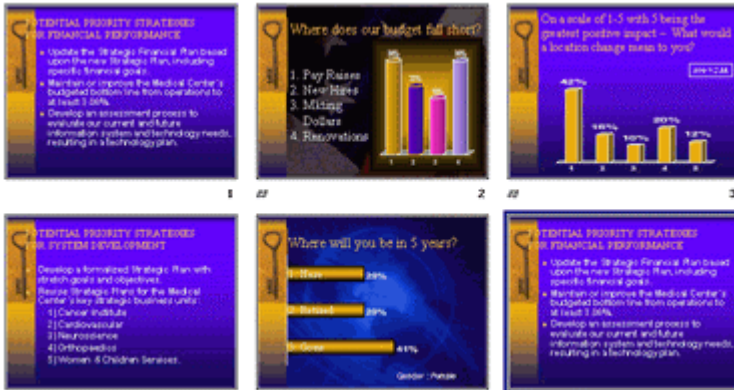
User-Friendly Presentation Controls: Because OptionPower is a PowerPoint add-in, interactive slides automatically match the look and feel of your presentations. Edit themes and objects, change timings, and control animations just as you would normally do. OptionPower leverages what you already know, eliminating the need for expensive and time-consuming software training.

Roster Import and Export: Rosters allow you to assign individuals to keypads for the purpose of tracking their responses. This is extremely valuable when conducting quizzes or tests in training or classroom learning sessions because OptionPower immediately tallies the results/scores for each of your participants. The roster import and export tool lets you enter a variety of information about participants, including their first and last name as well as the team or teams they are assigned to (if used in conjunction with the OptionPower Group Competition Module). A templated Excel spreadsheet, the roster can be imported into your OptionPower meeting and can later be exported back to Excel where it can be easily edited.



During The Meeting:

Poll Directly from PowerPoint: Polling slides are contained within your PowerPoint presentation. You navigate through them as you would any other group of slides.



On-the-Fly Question Tools: Pose a question to the audience at any point during your presentation, poll, and see immediate results.

Demographic Breakdowns: Polling results can be viewed by participant demographics to show the similarities and differences in responses from different groups. For example, learn how management's view lines up with the front line's view.

Flexible Display Options: Display polling results using all the capabilities of Microsoft® Chart®.

Dual-Screen Control Option: Simultaneously run both the design screen and the polling screen using Microsoft's multiple monitor support. Manipulate your presentation on one screen while your audience is focused on the presentation on the main display.

Multiple Hardware Platform Support: Use different types of interactive keypad systems, including radio frequency (RF) and infrared (IR) keypads, to support your specific meeting needs.

After The Meeting:

Reporting Options: Output a fully formatted Microsoft® Excel® report or use PowerPoint's print and web publishing capabilities. Take even more advantage of this powerful tool by purchasing custom reports from OTI.

Data Consolidation and Retrieval Utility: Because OptionPower data is stored in a relational database, you can instantly consolidate polling results from multiple sessions and later access the data for comparison and contrast.

